

In our previous meeting, the Team had privacy concerns with all-glass partitions at the private offices. The following slides show options which steadily increase the level of visual privacy

the team likes the idea of using different carpet colors to define spaces. B&P will continue exploring colors and patterns as the design progresses







the team likes the use  
of wood at the doors  
and walls to warm up  
the space



hold opens and  
locking hardware typ.  
at all offices







Extend solid wall beside the desks  
to increase privacy. In this scenario,  
the door could be glass with privacy  
film

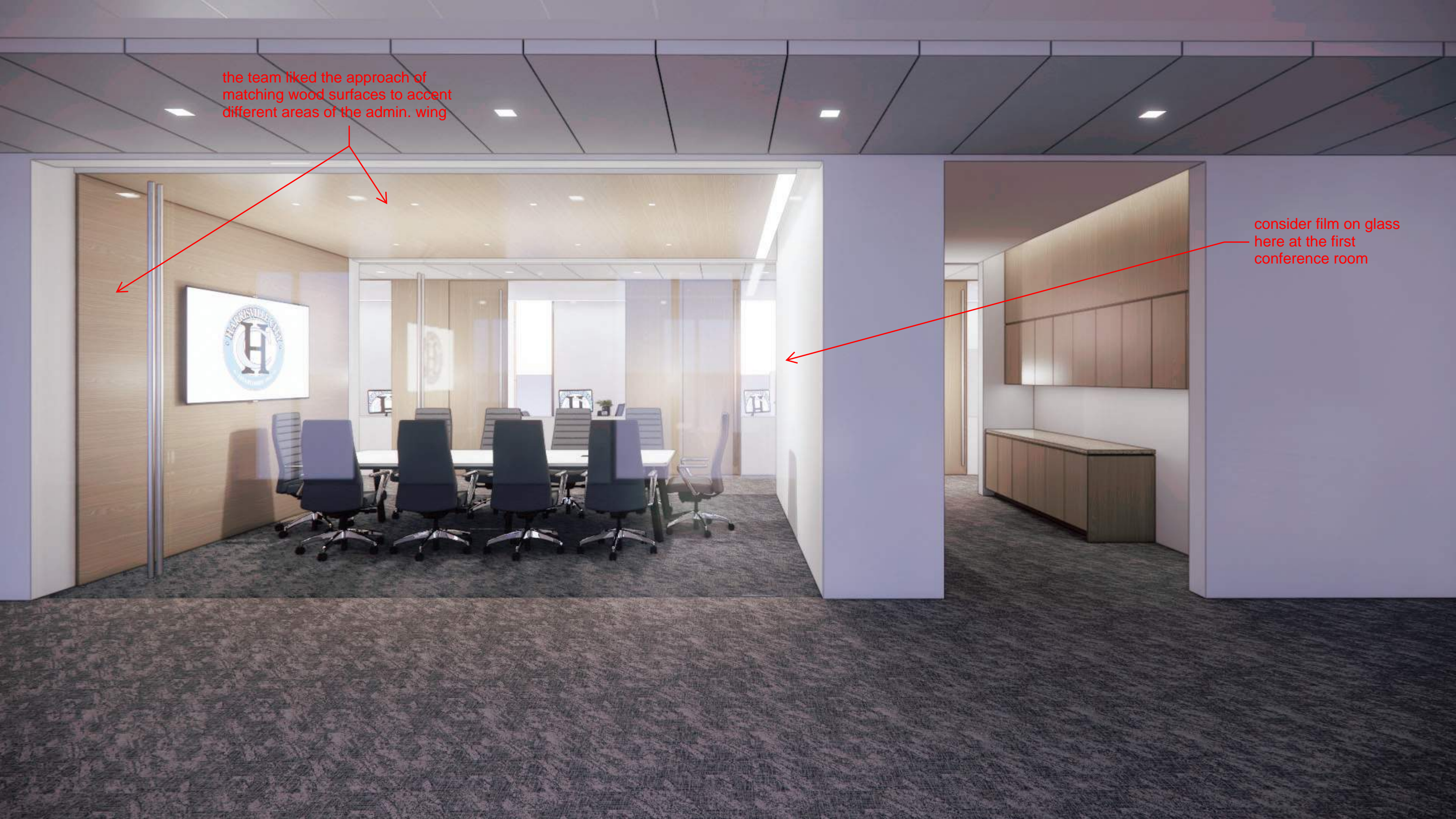
keep film on glass





the team liked the approach of  
matching wood surfaces to accent  
different areas of the admin. wing

consider film on glass  
here at the first  
conference room





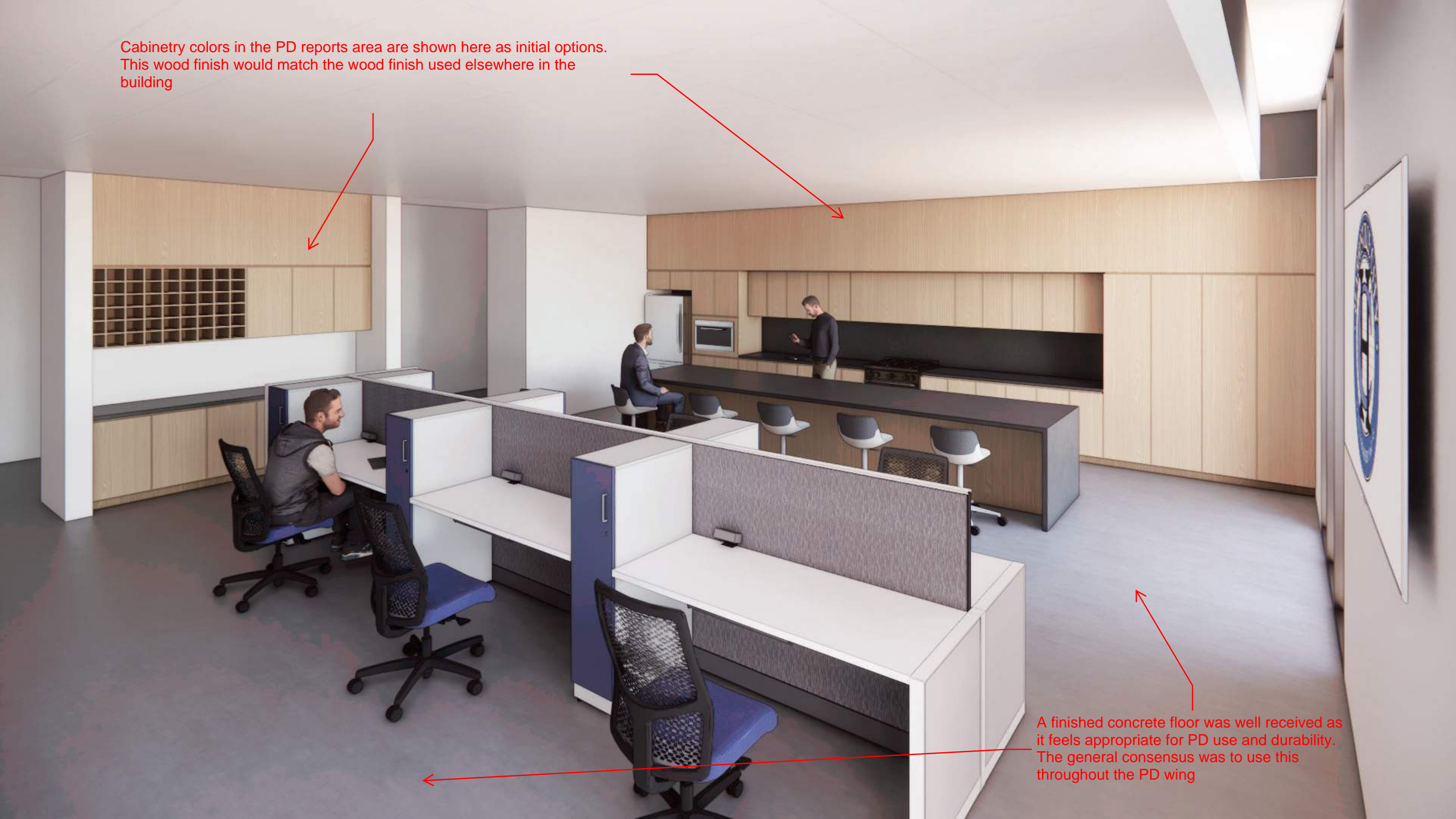
no need for locking conference room  
use hold-opens. no need for white  
boards

motorized solar  
shades here





Cabinetry colors in the PD reports area are shown here as initial options. This wood finish would match the wood finish used elsewhere in the building

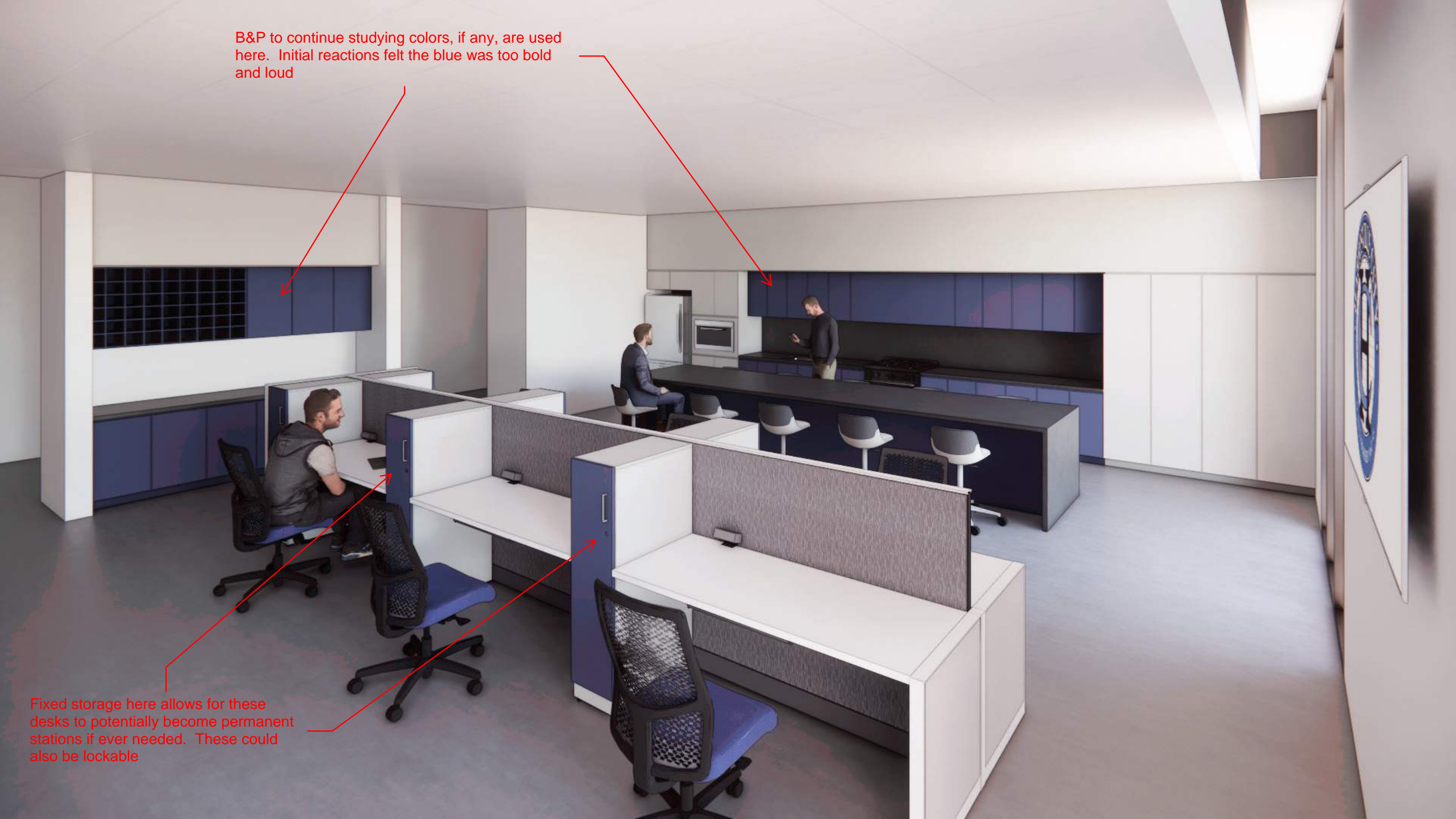


A finished concrete floor was well received as it feels appropriate for PD use and durability. The general consensus was to use this throughout the PD wing



B&P to continue studying colors, if any, are used here. Initial reactions felt the blue was too bold and loud

Fixed storage here allows for these desks to potentially become permanent stations if ever needed. These could also be lockable







Add a dishwasher to only this kitchen

X

X

The team thought more kitchen storage here was unnecessary and would rather have more seating





The Team thought doubling the seating at the island was a great idea as it would get much more use with casual meetings, catered events, extra work surface, etc..





potential for 10 seats at this island design







concrete floor in both  
spaces / throughout  
pd

The Team would rather not have a pony wall  
but needs the film for privacy



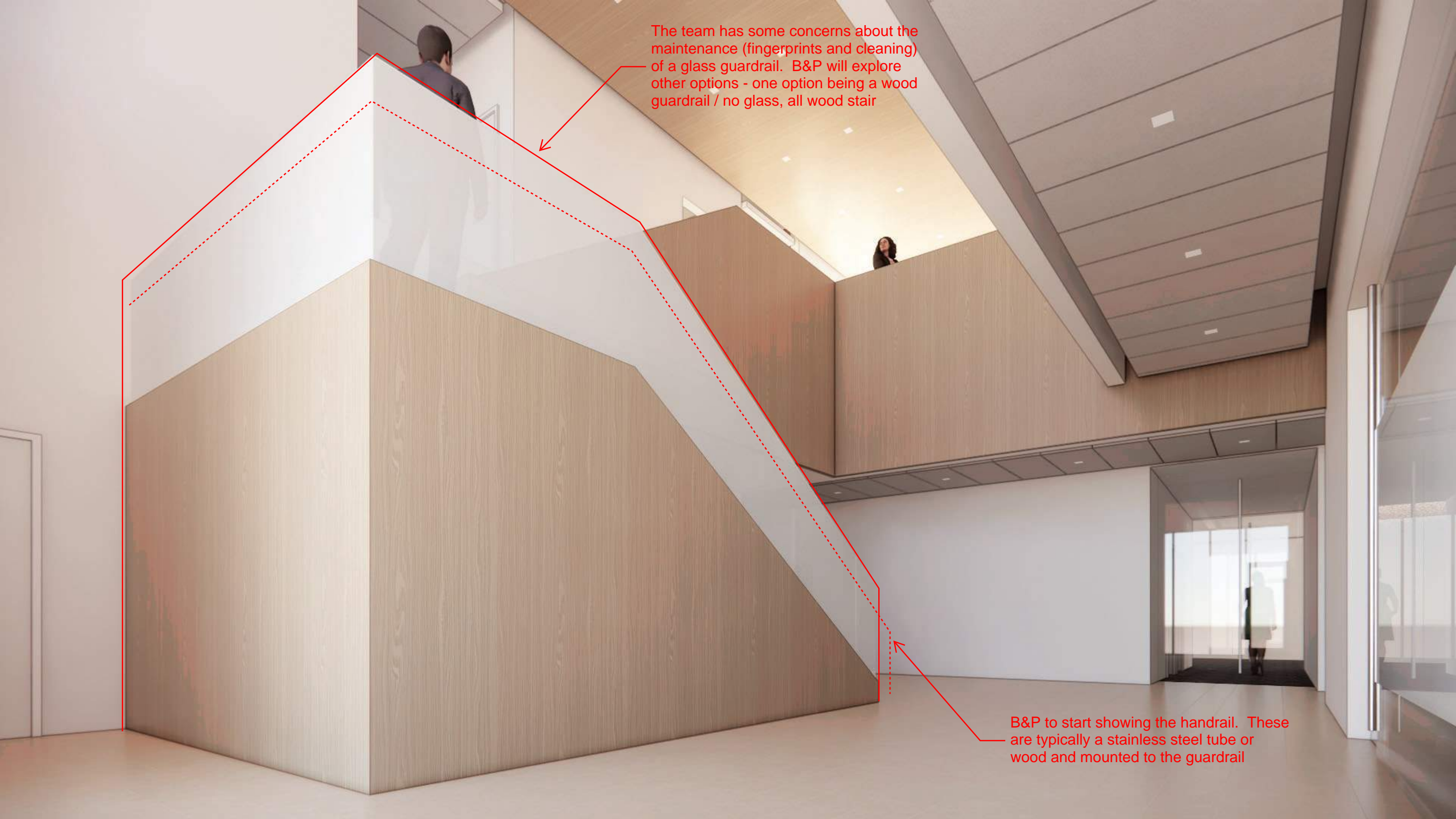




No pony wall







The team has some concerns about the maintenance (fingerprints and cleaning) of a glass guardrail. B&P will explore other options - one option being a wood guardrail / no glass, all wood stair

B&P to start showing the handrail. These are typically a stainless steel tube or wood and mounted to the guardrail







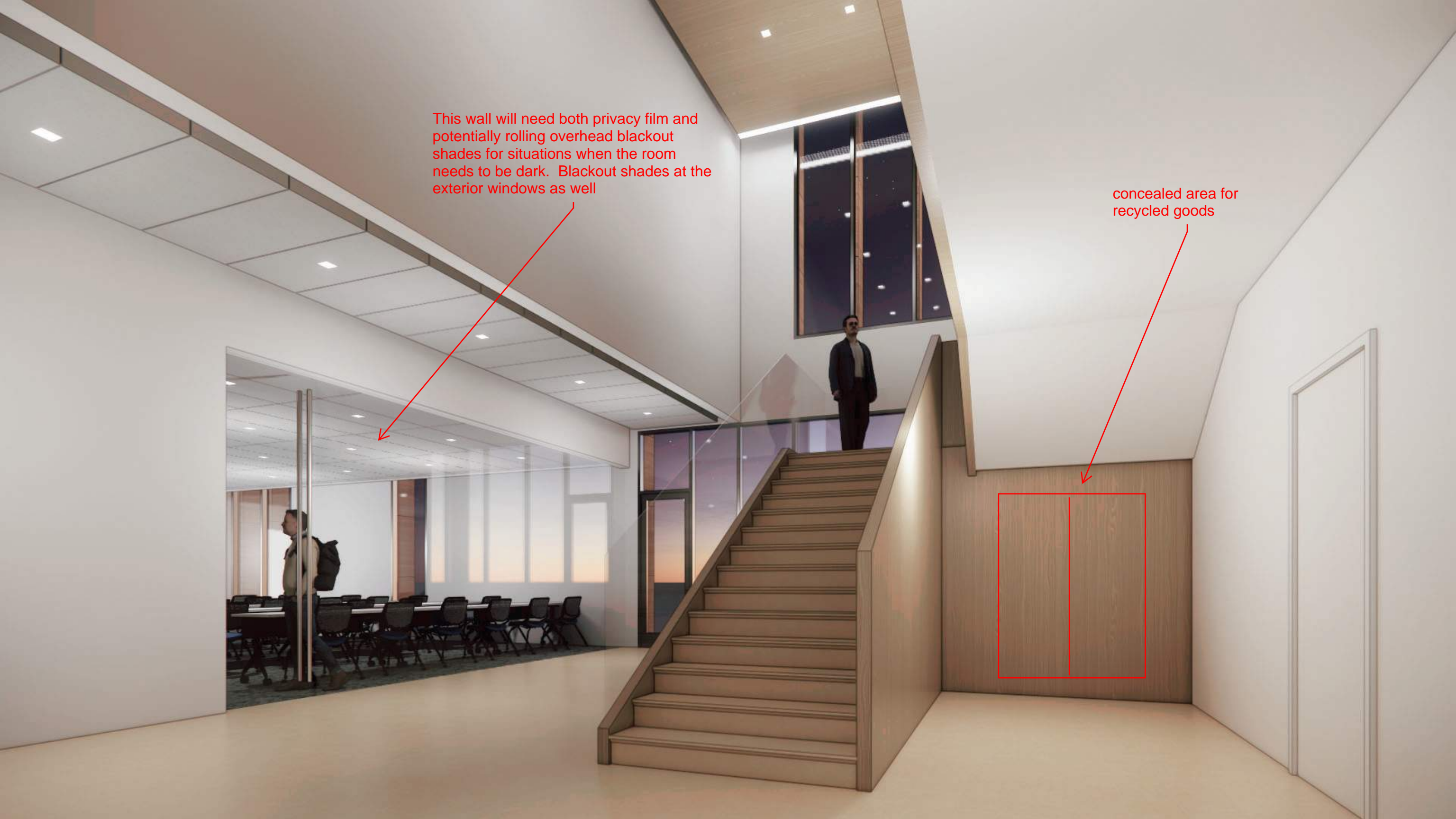
the team likes the use of a transparent film on the guardrail (if it remains glass - could stay wood)

the team likes the use of a tile throughout the Admin. lobby



This wall will need both privacy film and potentially rolling overhead blackout shades for situations when the room needs to be dark. Blackout shades at the exterior windows as well

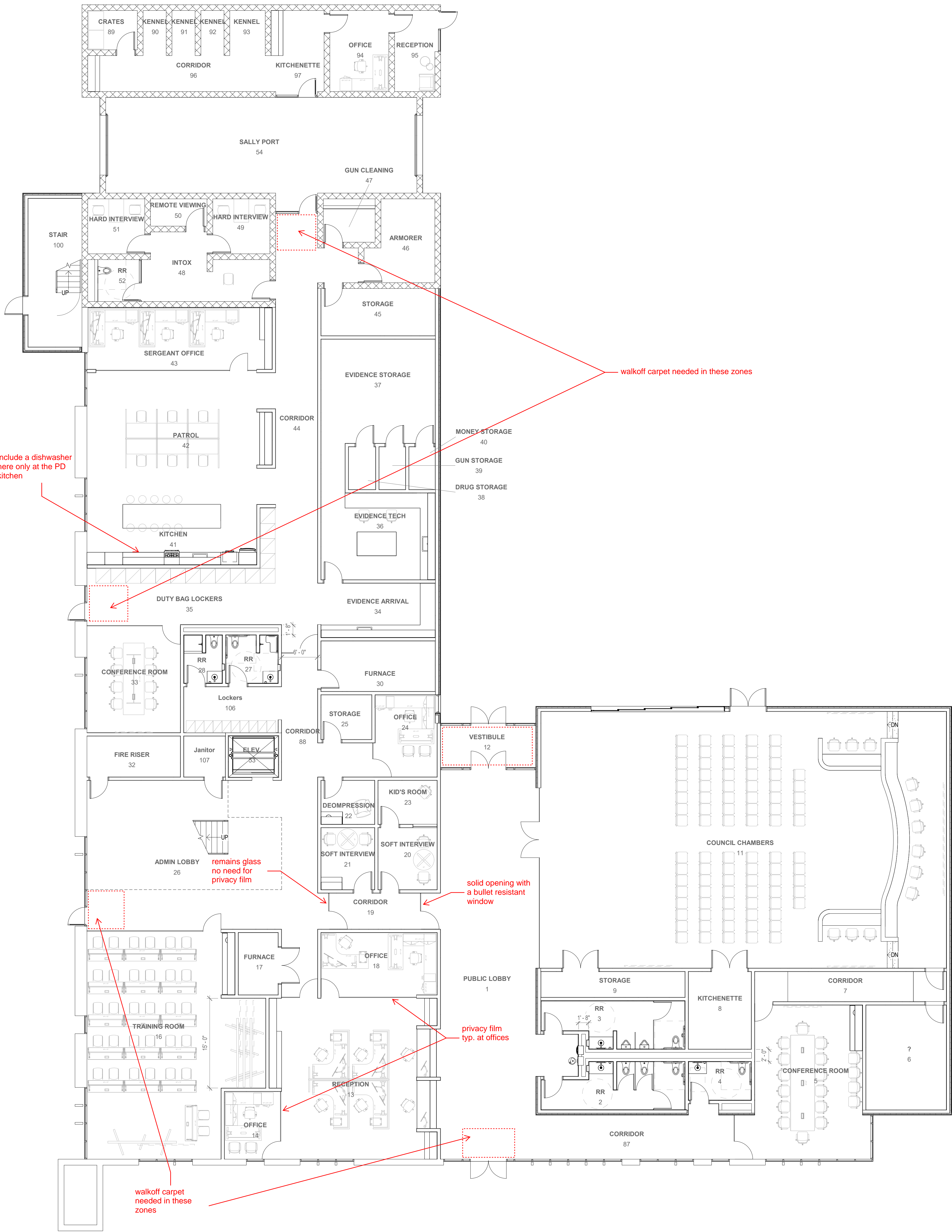
concealed area for recycled goods

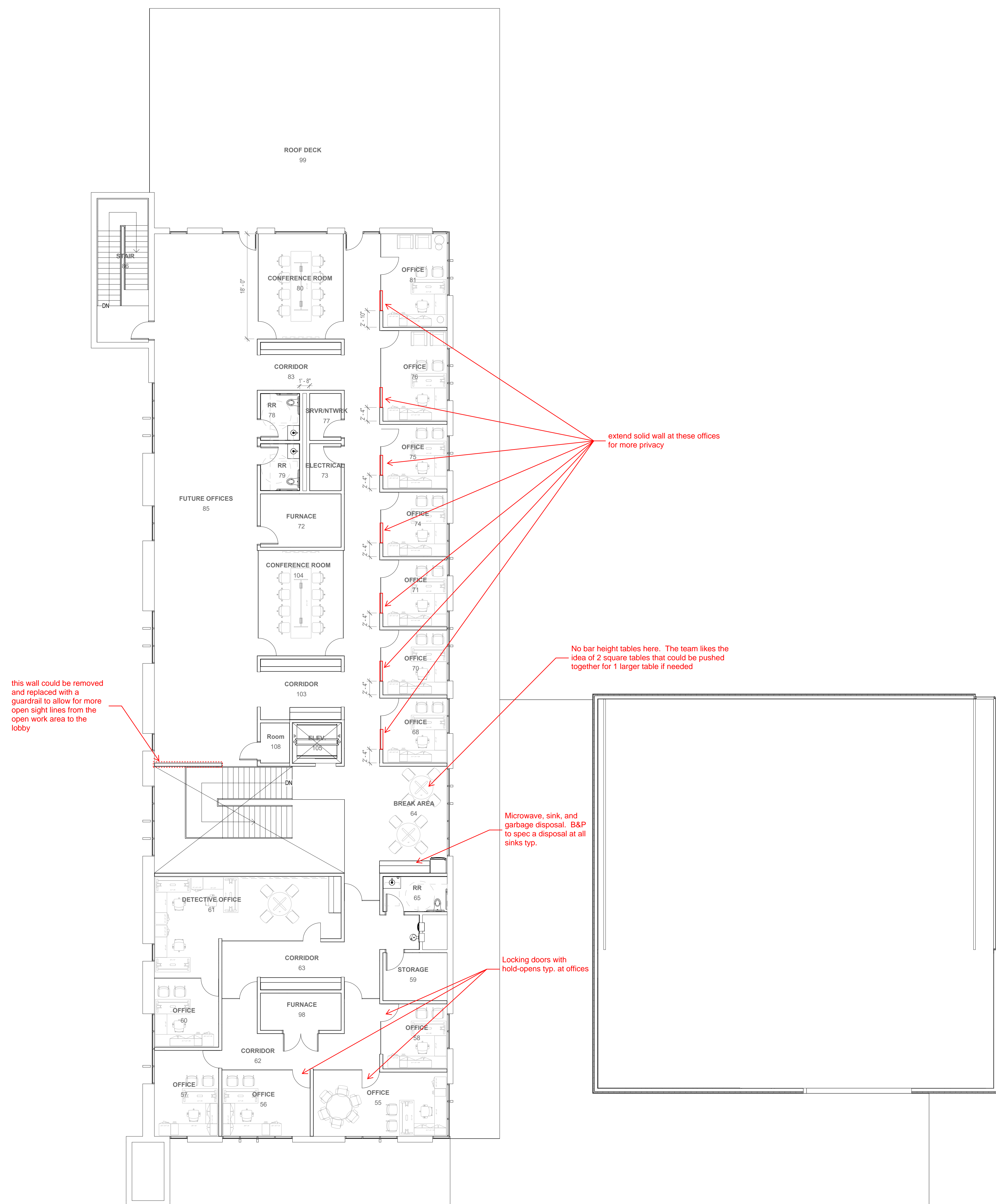


privacy film needs to go higher here for privacy from the stair landing. The team is ok with a wood door to match elsewhere







CORRIDOR  
84



Other views from the 3D walk-around:

