

Harrisville City City Complex

09 JANUARY 2025 | POLICE & CITY HALL REVIEW





AGENDA

FLOOR PLAN DEVELOPMENT RECAP

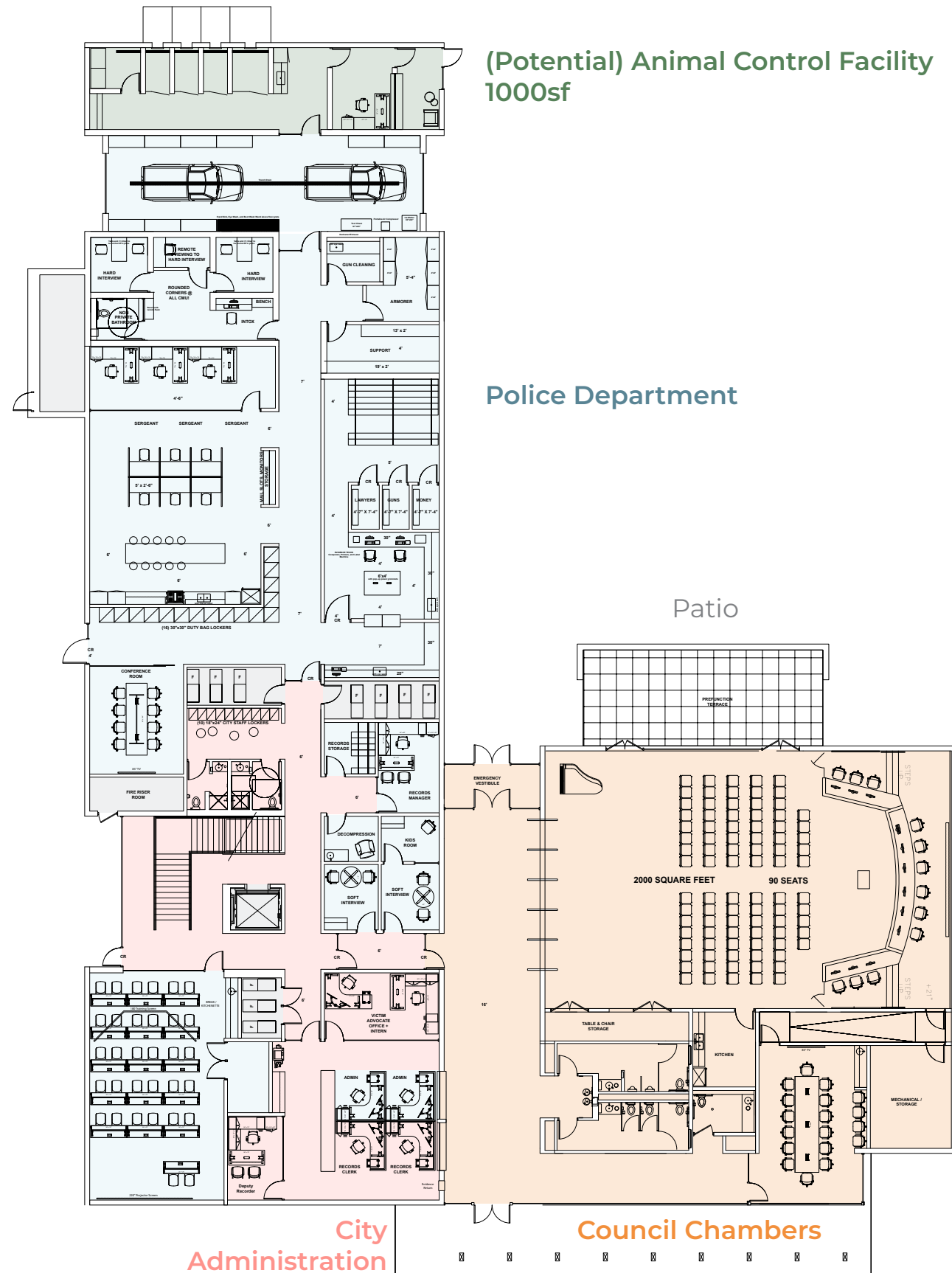
EXTERIOR RECAP

EXTERIOR DEVELOPMENT

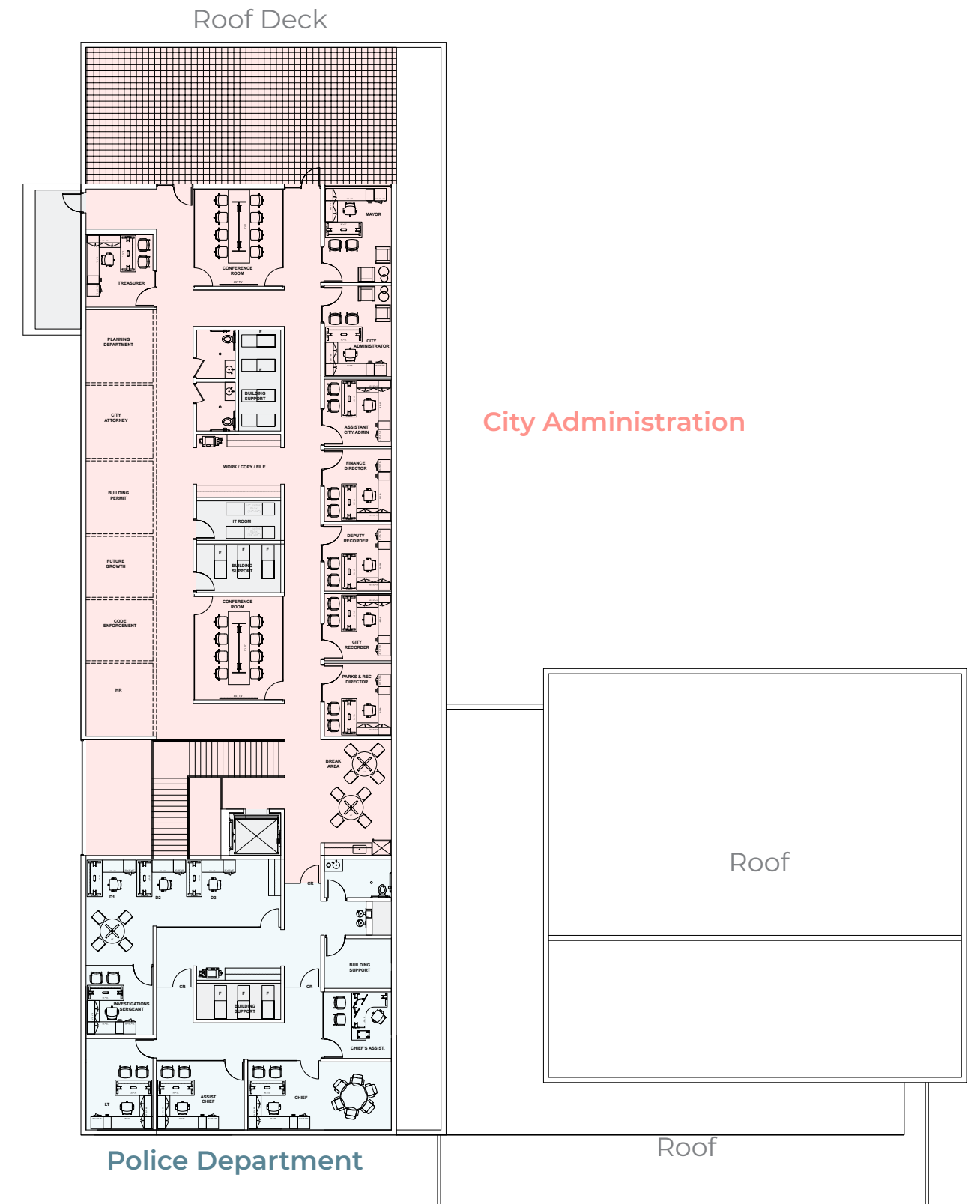
SCHEDULE

PREVIOUS FLOOR PLANS: 25,538 GSF (not including Animal Control)

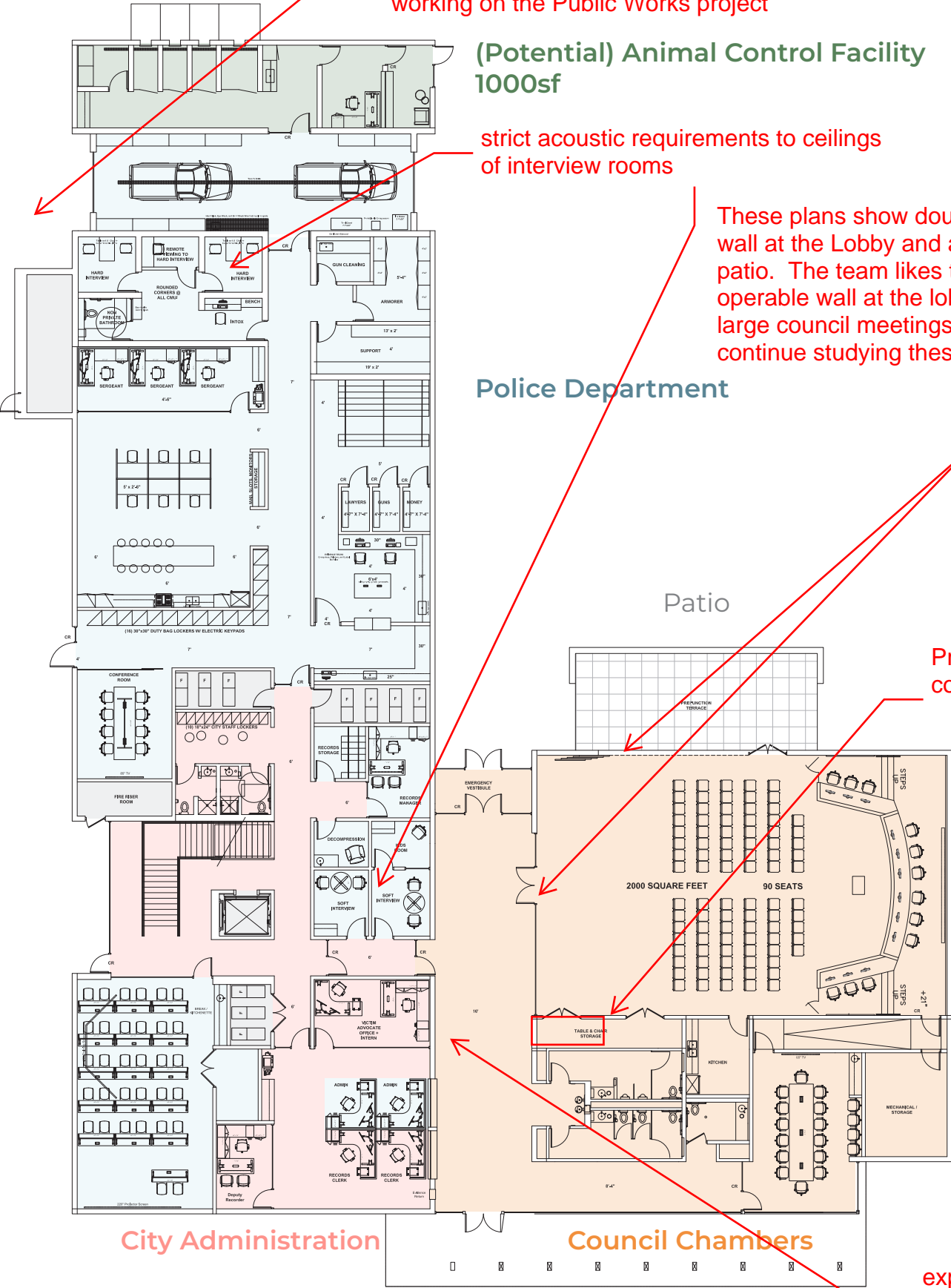
FIRST FLOOR PLAN



SECOND FLOOR PLAN



FIRST FLOOR PLAN



Wireless AP's on exterior of building to pick up video from police cars. "Pro Edge Technology" was referenced as a contact for these systems as they are familiar with the City's standards and needs - currently working on the Public Works project

(Potential) Animal Control Facility 1000sf

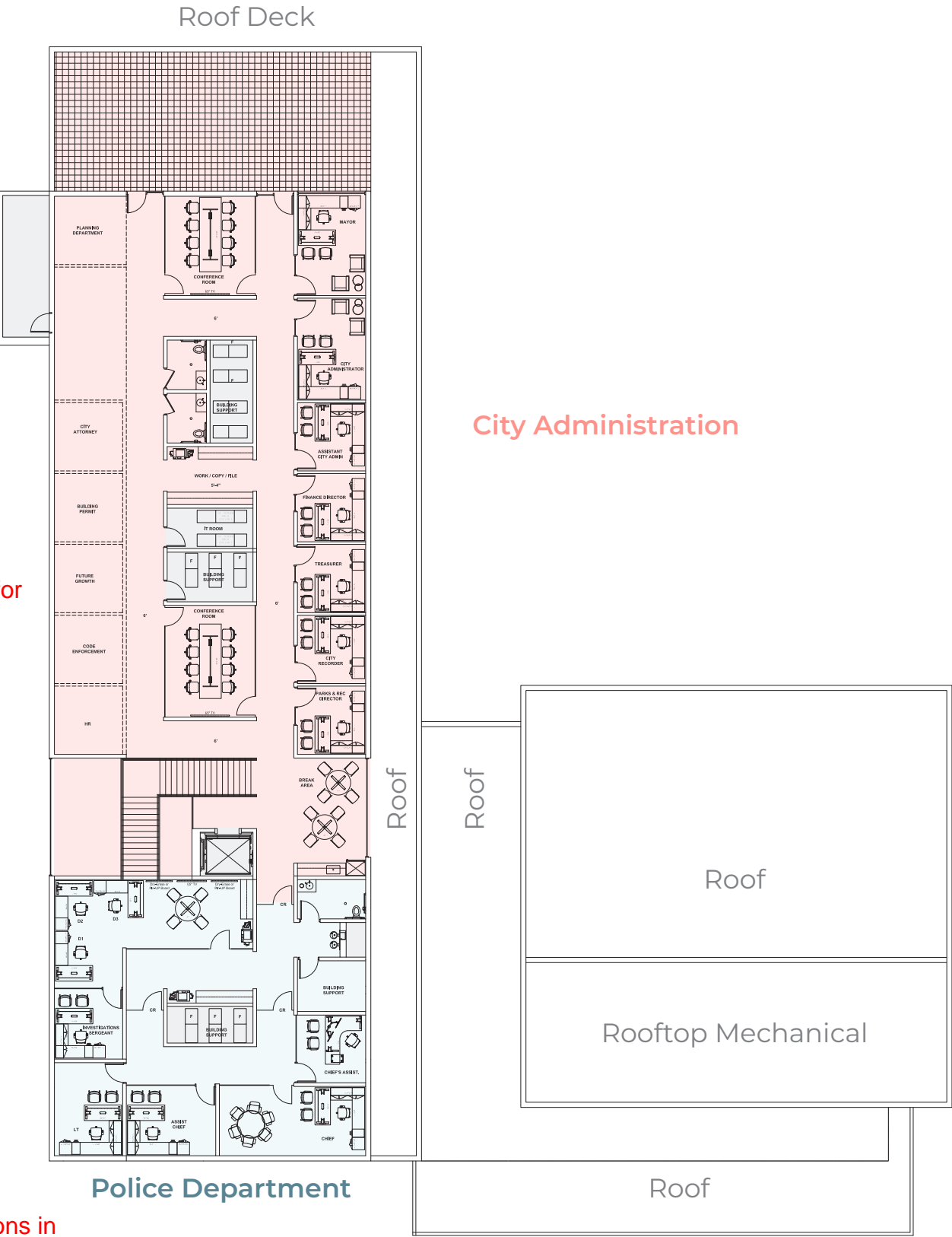
strict acoustic requirements to ceilings of interview rooms

These plans show double doors within a glass wall at the Lobby and a sliding glass wall at the patio. The team likes the idea but also thinks an operable wall at the lobby would be useful for large council meetings. Design team will continue studying these elements and their cost

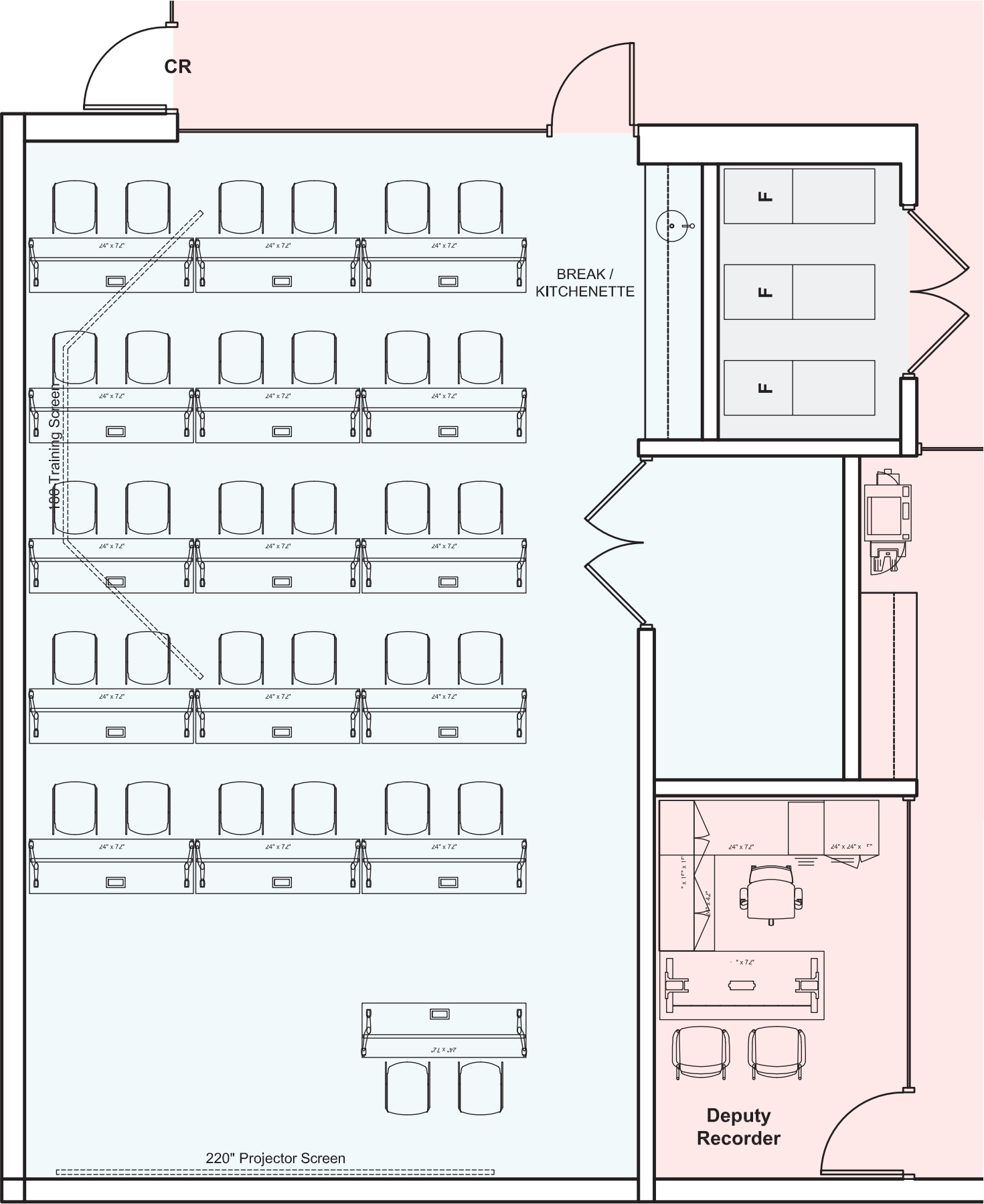
Provide a dedicated a/v rack for council chambers room

explore wall-mounted tv locations in lobby

SECOND FLOOR PLAN



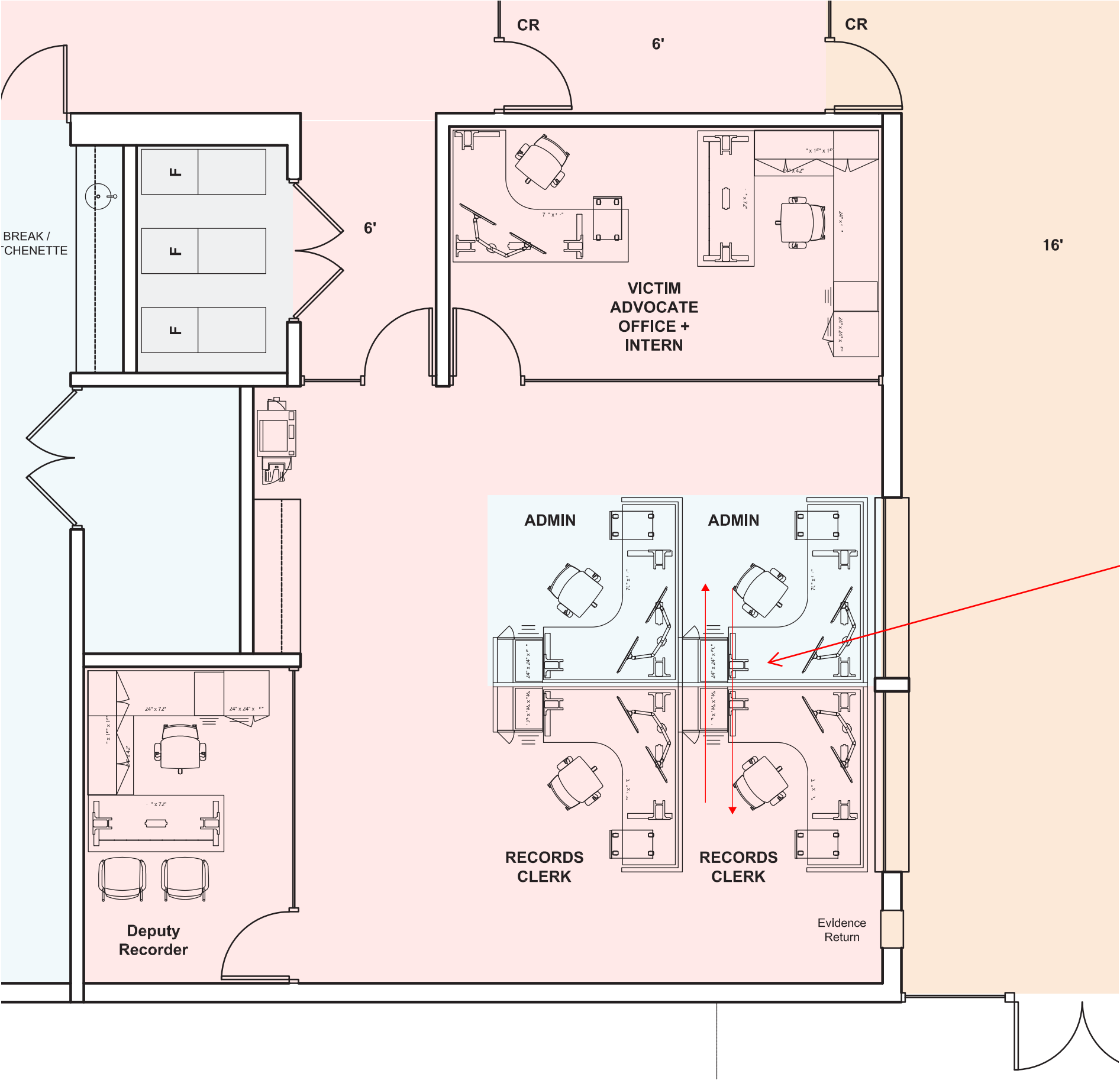
FLOOR PLAN OPTIONS: TRAINING ROOM SIMULATOR REQUIREMENTS



<https://titraining.com/>
<https://www.virtra.com/overview-le/>

BandP to reach out to
reps

FLOOR PLAN OPTIONS: PREVIOUS RECEPTION SUITE



flip this group of staff members

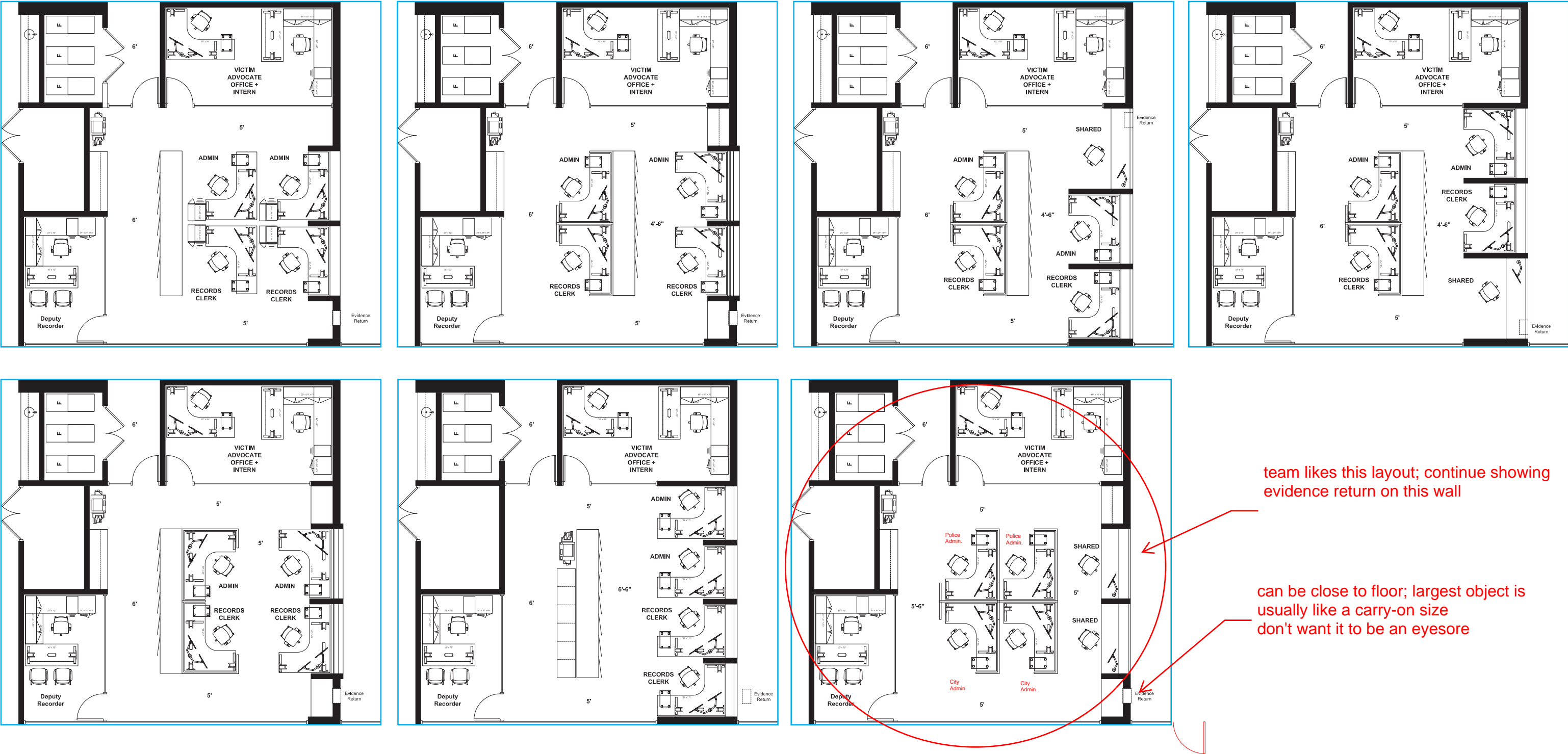
FLOOR PLAN OPTIONS: RECEPTION SUITE EXAMPLES



FLOOR PLAN OPTIONS: RECEPTION SUITE EXAMPLES



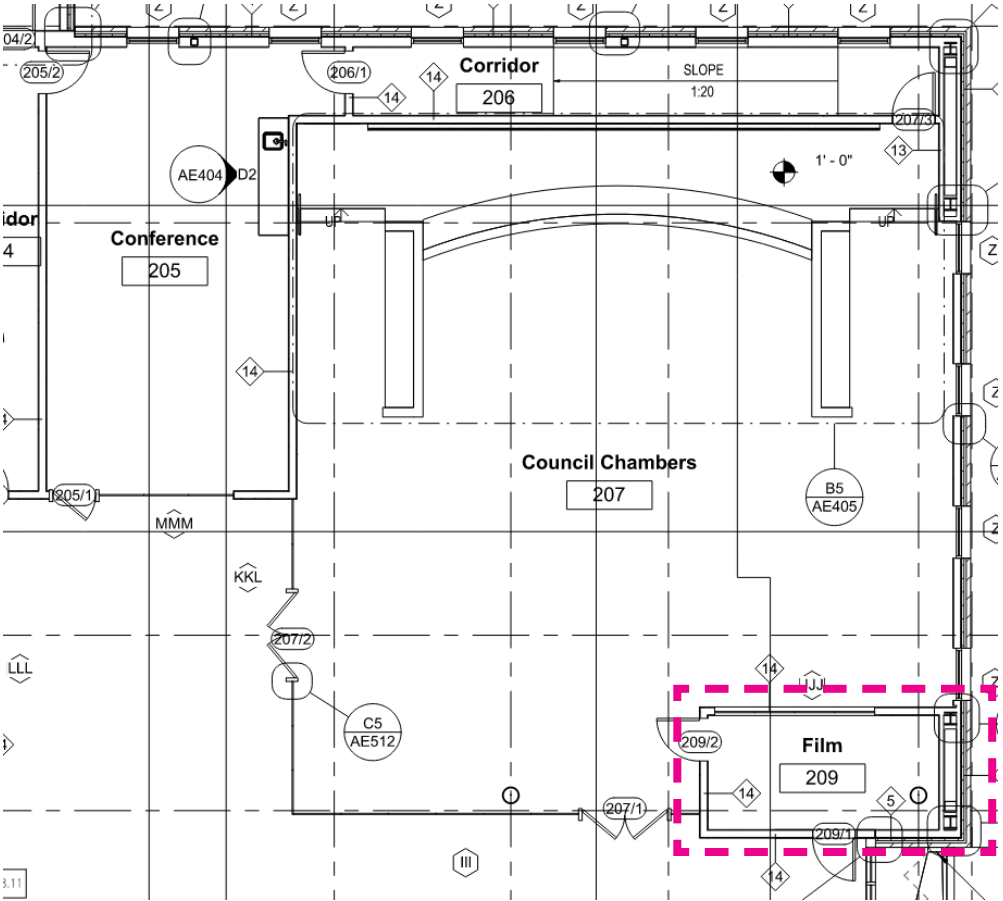
FLOOR PLAN OPTIONS: RECEPTION SUITE

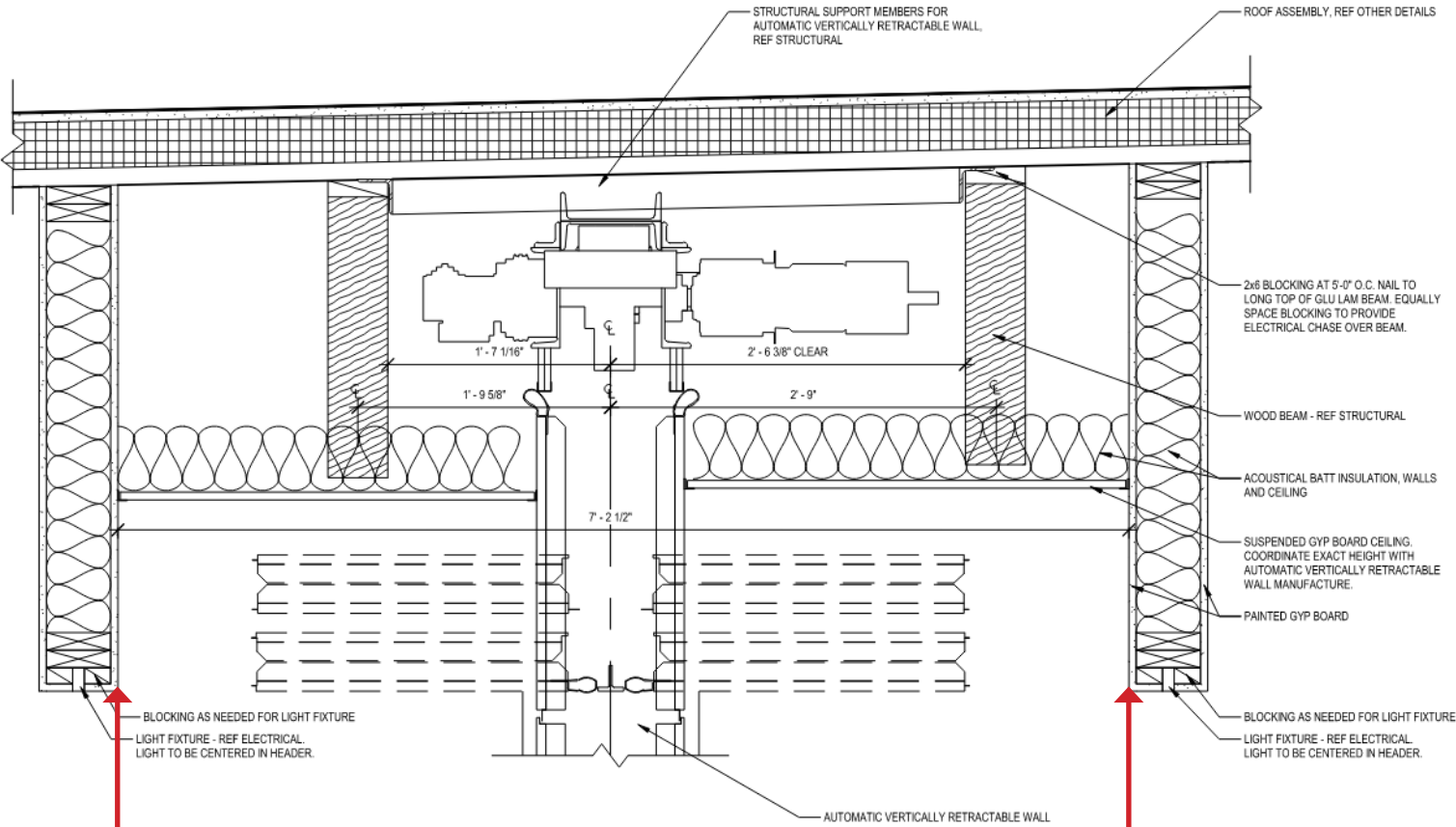




ITEMS FOR REVIEW: COUNCIL CHAMBERS

Design team to look into Pro Edge A/V team - currently working on public works





Vertically Retractable Wall Detail **A3**
1 1/2" = 1'-0"

7'-2 1/2"

EXTERIOR RECAP



EXTERIOR RECAP





CONCEPTUAL COUNCIL CHAMBERS RECAP



team discussed options for rock sizes in landscaping
discussed break sensing alarm sensors for after hours

3D MODEL

Views from the 3D model shown during the meeting:

The design team wanted to give an update on both the interior and exterior developments now that the floor plans are more defined. These studies are an update to materials and window openings which directly relate to the interior space layouts. One big decision was how to build out the surface above the second floor windows (glass to the roof or wood). The team preferred the wood version seen in the lower row below:



Team prefers the aesthetic of wood above the second floor windows vs. glass

Views from the 3D model Lobby shown during the meeting:

One configuration of the teller windows. The team preferred another version shown in the previous floor plan studies. Design team will update drawings and 3d model

ADA compliant counter will be needed regardless of teller window layout

Some building utilities will need to cross the Lobby's ceiling from the Admin. wing to the Council Chambers (water lines, electrical conduit, data lines, ducts and vents, etc..) The team liked the idea of concealing these items with a ceiling and enjoyed the wood look between beams shown here:



Skylight above the Council Chambers entrance was well-received by the team along with the glass wall separating the two

The team didn't like the idea of carpet in the Lobby. Shown here is a tile finish which everyone liked for its durability and elevated aesthetic

One concern raised in the Lobby was the durability of wood materials touching the floor. Design team will continue to study these details with durability and daily use in mind



Views from the 3D model Council Chambers shown during the meeting:

East-facing exterior window and featured wood ceiling above the dais. The team liked the aesthetic (from the inside and outside) and soft natural daylighting it would provide from the East



During previous meetings, the team asked for a hybrid screen approach (1 large projector and 2 side monitors) shown here:



The screen at the back of the room is OK to be a digital monitor

Views from the 3D model Conference Room shown during the meeting:

The team enjoyed the finishes in this room along with the size of the kitchenette and extra seating along the wall



The team stressed the importance of privacy at this room. There will be times when the occupants and material on-screen will need to be kept out of view. Shades at the exterior glass and privacy film on the interior glass were discussed as options. The design team will continue to study

Card reader still needed at this door as discussed in previous meetings

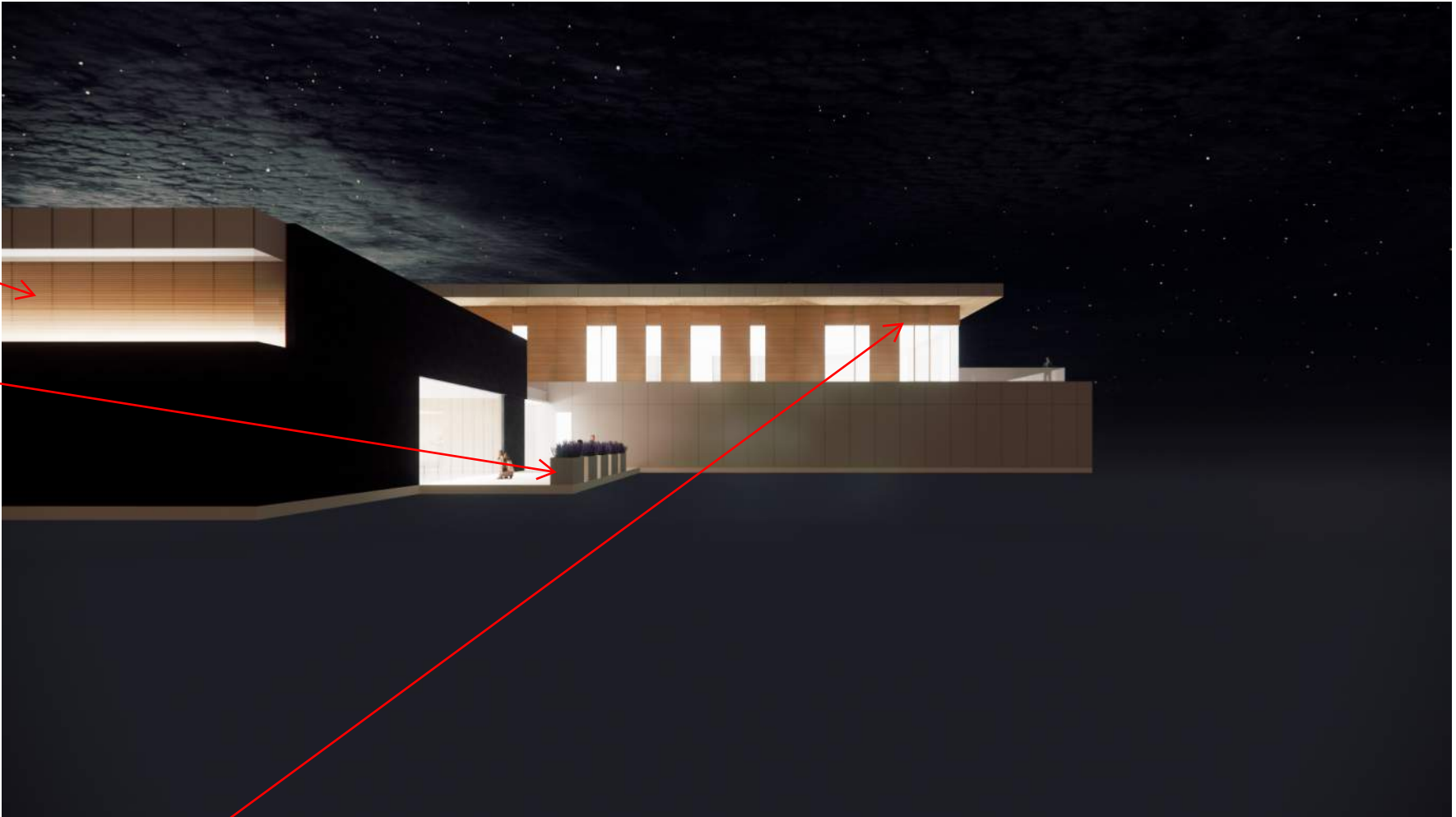
No card reader at this door as discussed previously



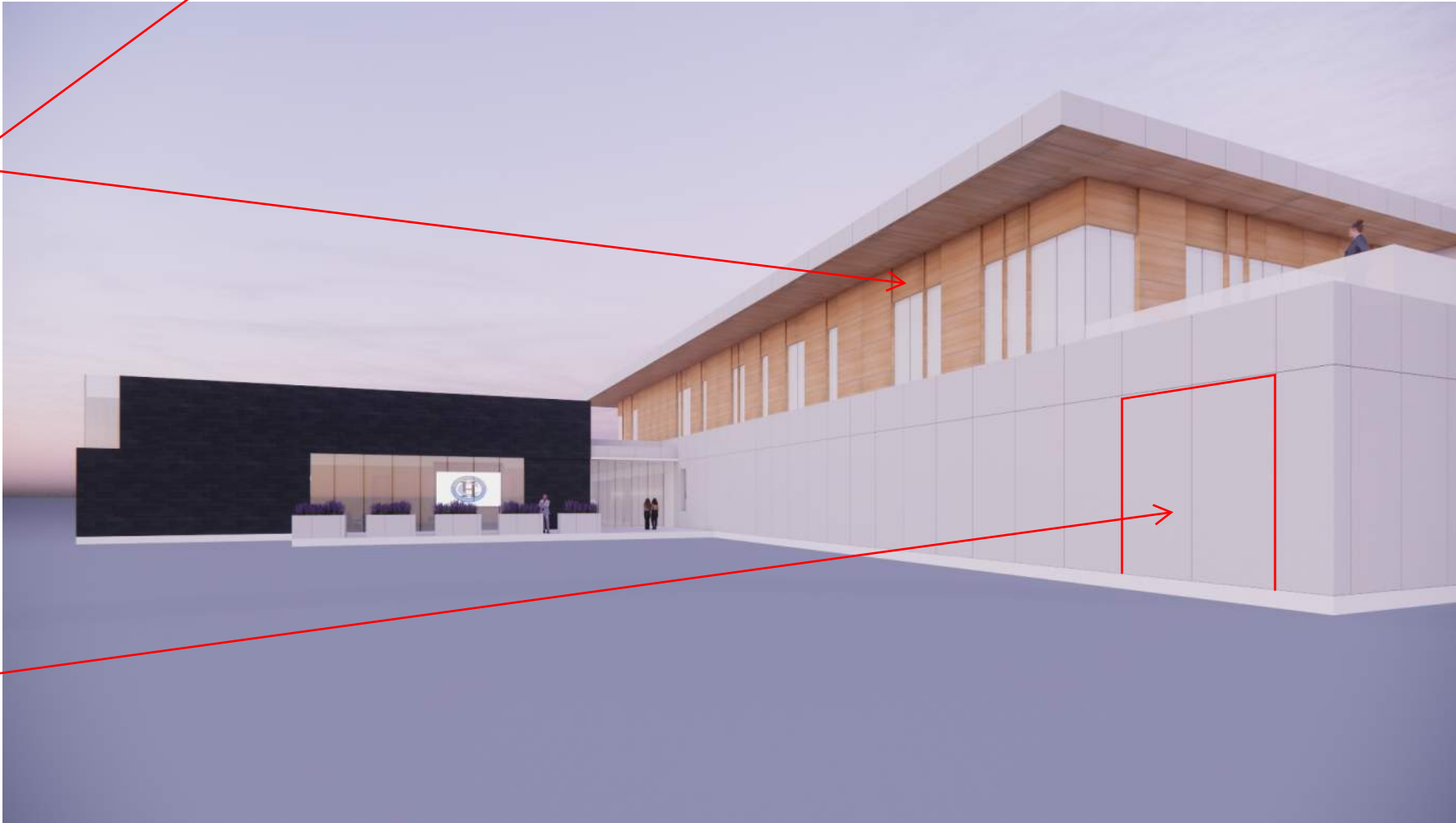
Other views from the 3d presentation:

View of the wood ceiling in Council Chambers. The team liked seeing this feature lit up at night

Planters on the patio were well-received as a deterrent from cars and as a way to define outdoor events



Wood above second floor windows as described in earlier slides



Overhead door into sally port not shown

SCHEDULE

NOVEMBER

Thursday, November 21 @ 10:30 am - Police / City Hall
THURSDAY, NOVEMBER 28 - THANKSGIVING BREAK!

DECEMBER

Thursday, December 5 @ 9:00 am - North View Fire
Thursday, December 5 @ 10:30 am - Police / City Hall
Thursday, December 19 @ 9 am - North View Fire
Thursday, December 19 @ 10:30 am - Police / City Hall
HAPPY HOLIDAYS!!

JANUARY

Thursday, January 9 @ 10:00 am - Police / City Hall
Thursday, January 30 @ 10:00 am - Police / City Hall

FEBRUARY

Thursday, February 13 @ 10:00 am - Police / City Hall

MARCH

Thursday, March 6 @ 10:00 am - Police / City Hall

OK for 10am next meeting

DD

DESIGN
DEVELOPMENT

CD

CONSTRUCTION
DOCUMENTS

March

April

May

June

(July)

